

While The City Sleeps

Working from home or walking to work?

As I wander round a still-deserted City, I wonder about all the empty offices, with their attentive, but surely bored security staff and their blinking screen savers. I am struck too by how much new, unoccupied office space there is, completed or still being built.

When I wondered aloud to the City planners about whether or not the pandemic and its aftermath would prompt a rethink of the draft Local Plan's aim to deliver a minimum of 2 million square metres of additional office floorspace during the period 2016-2036, they believed it would have no effect. Their response was upbeat, making the assumption that there would probably be a vaccine and that in the medium term, even though there might be more people working from home, the freed-up office space would attract new enterprises to The City. There is no change, therefore, to the Local Plan. For more on this, see Heather Thomas, The Office: Not Dead, but Diminishing.

More space for walking; less for vehicles

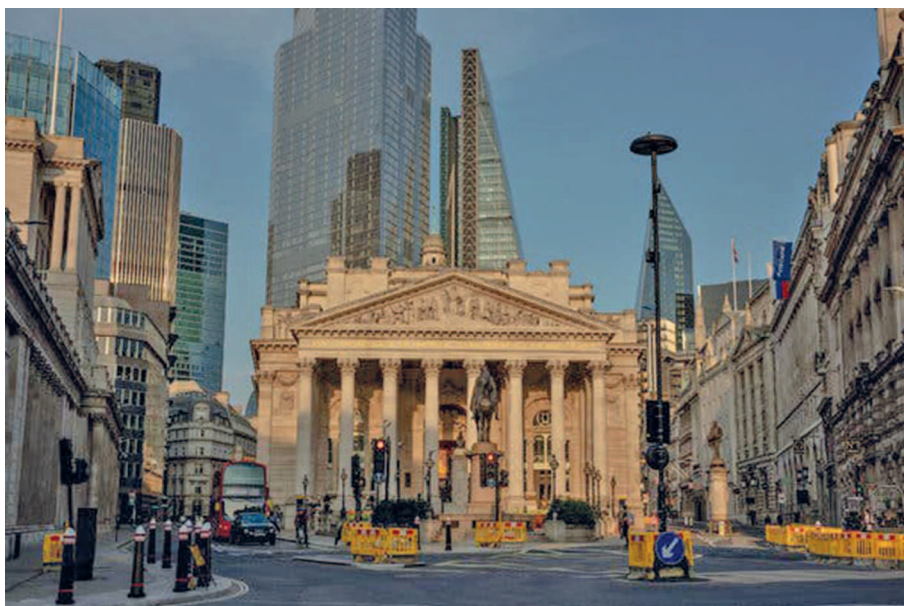
In the much shorter term, The City has been planning for the return of some of its office workers by remodelling the streets with bright yellow barriers and red and white plastic blocks. These are to provide more space for

pedestrians and cyclists on narrow City streets and hence, to restrict access for motor vehicles. There is an elaborate phased plan to increase the number of traffic restrictions (see www.cityoflondon.gov.uk/services/streets/covid-19-city-streets), which includes an interactive map where we can give feedback on individual streets. So far, there still are not many pedestrians around, though I wish that cyclists would use their own parts of the road and not ride on pavements.

That map does not include the Beech Street restriction to all but zero-emissions vehicles, because that is not part of Covid-19 planning. However, if you are having difficulty gaining access to your car park or want to make some other comment, please report this to Beech.Street@cityoflondon.gov.uk (online searching should produce maps showing how the scheme works). We have all received letters about the penalty charging system in operation, but we shall be contacting the transport team to enquire about what data it has collected about this experiment and what the data indicate.

Construction sites

A high proportion of pedestrians in The City, even now, seem to be construction workers and construction is one type of work that has continued almost since the beginning of the lockdown. When the government announced that it favoured allowing construction sites to



Come back soon!

CHAIR'S CORNER

work late into the evening and into the weekend, to allow social distancing on work sites, The City took a helpful line.

At the May planning committee meeting, the senior environmental health officer pointed out that The City already has a process for allowing out-of-hours working on construction sites. It receives around 1200 such applications a year, for such functions as 24-hour concrete pours or for bringing in large cranes at the weekend when roads are less busy. It would continue to require contractors to apply and would assess each case individually but, she advised, officers

Continued on page 3

IN THIS ISSUE

- CHAIR'S CORNER** Pages 1 & 3
While The City Sleeps
- WHO'S WHO IN THE BA** Page 2
- BARBICAN ESTATE RESIDENTS' CONSULTATION COMMITTEE**
Cracker-nomics Page 3
- GOVERNANCE, ACCOUNTABILITY AND FINANCE** Page 4
Governance Review Postponed
- PLANNING AND BUILT ENVIRONMENT** Pages 4 & 5
The Office: Not Dead, but Diminishing, Even Less Funny, Another fine mess at Clendon Court, Residents' objections do succeed
- FAKE NEWS?!** Page 5
(Not the) Barbiworld Lido (in dreams)
- WILDLIFE AND GARDENS** Page 6
The Barbican Wildlife Garden: Then and Now
- SECURITY AND SAFETY** Page 7
From Scammers to Civil Injunctions and Criminal Behaviour Orders
- CULTURE AND ENTERTAINMENT**
Art is Back, Barbican Tuesday Club Page 7
- BA MEMBERS' DISCOUNTS** Pages 7 & 8

THE BARBICAN ASSOCIATION

OFFICERS

Chair: Jane Smith, chairBA@btinternet.com
Deputy chair: Mike Bristow
Honorary secretary: Christopher Makin chairspeedhouse@outlook.com.
Treasurer: Tony Swanson
Hon Auditor: Tony Croot
Membership secretary: Jim Davies membership.BA@gmail.com
Website administrator: Cathryn Worrall
Assistant treasurer: Nigel Dixon

SUBCOMMITTEE AND WORKING GROUP CHAIRS

Access and Walkways: vacant
Arts Centre Group: Jane Smith
Culture Mile and Centre for Music: Jane Smith
Estate Security: David Bradshaw
Planning and Licensing: Helen Kay and Sue Cox
London Underground: Richard Collins
Bernard Morgan House Liaison: Fred Rodgers
London Wall Place 1: Helen Kay
London Wall Place 2: Mary Bonar
Road Traffic adviser: Ted Reilly
Sustainability adviser: Sarah Hudson

THE ELECTED MEMBERS FOR 2019-20 ARE:

Randall Anderson, David Bradshaw, Michael Bristow, Adam Hogg, David Kirkby, Helen Kay, Christopher Makin, Jane Smith, Sandy Wilson

HOUSE GROUP REPRESENTATIVES

Andrewes House	Lionel Meyringer
Blake Tower	Jay Thies
Ben Jonson	Helen Hudson
Brandon Mews	Humfrey Brandes
Breton House	Fred Rodgers
Bryer Court	John Taysum
Bunyan Court	Derek Penney
Cromwell Tower	Tim Cox
Defoe House	David Kirkby
Frobisher Crescent	Jenny Addison
Gilbert House	Ian Dixon
John Trundle Court	Janet Wells
Lambert Jones Mews	Richard Collins
Lauderdale Tower	Lionel Green
Mountjoy House	Andy Hawkins
Seddon House	David Graves
Shakespeare Tower	Sarah Bee
Speed House	Christopher Makin
Thomas More House	Hugo Dinis
Wallside	Mary Bonar
Willoughby House	Hilary Sunman

BA Newsletter editor: Robert McKay robert.mckay123@btinternet.com

While The City Sleeps

Continued from page 1

"wouldn't put the needs of social distancing [on building sites] over the needs of residents' health"; applications for extended working hours intended to take place next to densely residential areas were unlikely to be approved. There is a helpful interactive map which shows all variations to working hours that have been granted at:

https://www.mapping.cityoflondon.gov.uk/geocortex/mapping/?viewer=compass&runworkflowbyid=Switch_layer_themes&LayerTheme=Show%20the%20Construction%20Variations%20layers.

If there is a building site near you on which work is being done in the evening or on Sunday, you can discover if it has permission so to do.

Climate change

Much of the Barbican Association's time and that of the Residents' Consultation Committee has been occupied in matters relating to climate change. Before the

lockdown, The City commissioned five reports from consultants, to establish baseline data for carbon dioxide emissions resulting from the Corporation's own property and activities and from the wider business community in The City. Members have been briefed on the findings but there are no public documents. We have been told that the strategy is due to be consulted upon but there is very little information on the website, www.cityoflondon.gov.uk/services/environmental-health/climate-action/climate-action-strategy. There is a survey, but it is not clear what relationship the questions have to the information found, or what is the thinking about a future strategy.

Normally, I would encourage residents to respond to the questionnaire, but I am less sure regarding this one. It would be helpful if people could email climateaction@cityoflondon.gov.uk and make their views known on what they believe The City should be doing on climate change resilience and reducing emissions, in particular, what actions The City might take to help support and magnify residents' own actions.

CHAIR'S CORNER

The Barbican Association submitted a document, <https://www.barbicanassociation.co.uk/community/climate-change/>, outlining the sorts of measures which might be considered in the Barbican to reduce carbon emissions. Obviously not everyone will agree with all of them and there will be other ideas too, but the point was to show that many Barbican residents care about climate change and are willing to engage with The City in making the Estate more resilient to climate change.



Jane Smith

Chair, Barbican Association
chairBA@btinternet.com

Cracker-nomics

What would you do if your business had disappointing sales? Adopt a new marketing approach? Look for new customers? Discount your prices? If only such logical approaches applied in the Barbican.

Although demand for the parking spaces beneath our homes has dropped by 20 percent during the last decade, prices have soared by 29 percent. Demand for parking spaces edged up last year when prices were held flat, but parking prices are rising again this year. One of your representatives described this approach as "crackers", so welcome to the world of "cracker-nomics".

So what?

Before readers like me, who do not have a car, see this price hike as irrelevant, remember that the Barbican's residential car parks are more than places to park motor vehicles. They are the street level entrances to many blocks; they are where bicycles are stored; they are home to the new store units and they are the bases for our concierges/car park attendants, who contribute to the security which we all value.

To maintain our security and convenience, it is in all residents' interest that the Barbican's residential car parks are run in an economic manner, but the current budgeted deficit is £346,000. This year's price increase is intended to reduce that deficit but given that demand will fall as prices rise, the impact can only be minimal.

The logical way to improve a car park's



Costly, lonely Subaru

accounts is to have more cars parked in it. Yet, The City, understandably, wants fewer vehicles on its streets, so as to cut pollution and enhance road safety. What is needed now is some creative thinking as to how the car parks' income can be increased or costs reduced without damaging the security and quiet which residents value. If you have a good idea, please let me know.

The cost of lockdown

Any resident who stayed in the Barbican during the lockdown will have seen that services on the Estate were reduced. Rubbish collections fell to three days a week, the Estate Office was empty, and some car parks were not staffed in the early weeks.

Less service usually equals less costs, so am I looking forward to a service charge 'holiday'? Sadly not, but this time it is not "cracker-nomics".

Instead, the Estate Office team members have been working from home, so there is

BARBICAN ESTATE RESIDENTS' CONSULTATION COMMITTEE

no saving there, even if they have not been physically visible. Other employees have been shielding during the lockdown and they were replaced by agency staff, whose costs will need to be paid.

The allocation of lockdown charges is something which I have requested and will be a point that your Residents' Consultation Committee (RCC) will review when the accounts for this period are available. Although residents are willing to pay our fair share of the bill, we are not willing to pay costs that should rightly be born elsewhere.

The next RCC meeting is scheduled for Tuesday, 2 September and we plan to hold it virtually. I hope that this meeting will be available to watch live online, so please check The City's website, <http://democracy.cityoflondon.gov.uk>, closer to the time.



Christopher Makin

Chair, Barbican Estate Residents' Consultation Committee (RCC), that represents residents in their relationship with the City as their managing agent and landlord.

Governance Review Postponed

The City's first governance review since 2011 is currently being conducted by Lord Lisvane (see the May 2020 issue of the Newsletter, www.barbicanassociation.co.uk/wp-content/uploads/2020/04/BA-NEWSLETTER-MAY2020-approved.pdf). The review was due to be published in May. It has been postponed to an, as yet, unspecified date, owing to the practical difficulties presented by Covid-19.

In the meantime, the Court of Common Council, at its meeting on 18 June 2020, considered a motion to "convene a working party, to be chaired by the Chief Commoner [who is elected each year by the Court to represent the interests of common councilmen], to report as soon as practicable on how proceedings for breach of the Corporation's Code of Conduct may be conducted without members sitting in judgment on each other". The motion seeks to address the manner in which the Corporation responds to complaints about members' behaviour, whether by other elected members, by the public or by Corporation staff.

It is one of the roles of the Standards

Committee to monitor the operation of the City of London's Code of Conduct for Members and to process complaints about alleged breaches of it. As required by the Localism Act 2011, the Corporation has published how such complaints will be handled. The procedure requires the Standards Committee to appoint an Assessment Sub-Committee to consider whether or not to refer the complaint for a formal investigation before another sub-committee of the Standards Committee, known as the Hearing Sub-Committee; there should be no overlap in the membership of each Sub-Committee. The 2011 Act also provides for an Independent Person to be consulted as the process develops (and it will likely be a different Independent Person at each stage of the process). The Independent Person's views must be sought and taken into account by the Sub-Committee in question. Nevertheless, the role of the Standards Committee is pivotal and necessarily leads to "members sitting in judgment on each other".

The June motion was amended to delete the reference to members sitting in judgment on

GOVERNANCE, ACCOUNTABILITY AND FINANCE

each other and to refer the matter to Lord Lisvane for full and comprehensive incorporation into his governance review; following a vote, the amendment was carried. It would be surprising if Lord Lisvane did not already have this aspect of the Corporation's machinery in his sights. The Standards Committee is ripe for reform, having been at the heart of a number of controversial proceedings in the last 18 months. A thorough assessment by Lord Lisvane of its role and operation will be welcomed.



Lord Lisvane

Heather Thomas

The Office: Not Dead, but Diminishing

As employers contemplate how difficult it is proving to return staff to their offices, compared with the relative ease of exiting them, cold towels are being donned to analyse just how much office space a business really needs. The resilience of technology has been astonishing, opening the door perhaps to permanently flexible methods of working. Working from home (WFM) does not suit everyone or every role but staff surveys consistently show majorities of 70%-80% in favour of retaining a significant element of WFH, post Covid-19. As well as responding to staff preference, businesses are eyeing a material reduction in the fixed costs of office space, with the possibility of other prizes, such as perceived greater diversity in the workforce and higher productivity.

One specific problem which is troubling businesses, anxious, above all, to keep staff safe, is how to navigate the bottlenecks known as the lifts/elevators. Some firms have calculated how long it would take to transport all their employees safely from reception to their desks and the answer is not encouraging (anywhere between 3 and 7 hours, it seems); the taller the building, the longer it takes.

In a changing scenario, the Corporation is planning to launch, in the autumn, a second round of consultation on the 2036 City of London Local Plan. The Plan envisages providing 2 million square metres net (i.e. excluding common parts, lifts, toilets and other shared facilities) additional office floor space, of which



A relic of the past

1.5 million square metres would be delivered in the decade 2016 to 2026. The Plan states that "Further tall buildings will be encouraged". The question of how Covid-19 will impact forecasts made in the confident pre-virus environment has already been raised at Corporation meetings, specifically at the Planning and Transportation Committee on 14 May and at the meeting of the Court of Common Council on 18 June. The Chair of the Barbican Association has also raised the

PLANNING AND BUILT ENVIRONMENT

matter in correspondence; see *Chair's Corner* for more on this topic.

The principal response from the Corporation is that it is too early to tell, which clearly it is. Factors cited in favour of a continuing strong appetite for office space include, an effective vaccine; the inherent social and cultural attractions of City and wider London life; unrivalled professional opportunities; a continuing need for face-to-face encounters for deals, training and senior management meetings. While all this may be true, does it add up to 2 million square metres net additional space? There are already City firms which encourage WFH as they cannot fit all their London-based staff into their offices. The compulsory pilot of WFH, which has been conducted over the last four months, will undoubtedly lead, at minimum, to a more nuanced relationship between work and home; tall, trophy buildings suddenly look less attractive. The impact on the City and on the Corporation's budget might be significant. In the autumn, residents will be able to make their own predictions in response to the 2036 Plan consultation.

Heather Thomas

Even Less Funny

In the May 2019 edition of the Newsletter, under the heading "Are We Having Fun", www.barbicanassociation.co.uk/wp-content/uploads/2019/05/Barbican-Association-Newsletter-MAY-2019.pdf, I expressed personal views, which I continue to hold, about the unappealing nature of some of the Barbican

Estate's local and adjacent streets; Whitecross Street and Beech Street were and are to the front of my mind. If any of my points and opinions had value or resonance then, it is likely to be more so over a year later.

Covid-19, in itself and maybe as a disguise to the state of the economy, has made Whitecross Street an even more miserable place. At least one restaurant and a shoe shop have gone and a walk along the street shows the extent of the

empty commercial premises; no one gains from this.

Whereas, in better times, the street might, at least during the week and for part of the day, be filled with the buzz of its street food stalls, I wonder what is the benefit of questionably hygienic and less-regulated vans and stalls, when proper fixed premises are left empty? Would it not make sense to coax traders off their stalls and into shops, perhaps leaving us with a

clean and appealing pedestrianised street along which to enjoy and support its services?

It is difficult to imagine a return to better times without a high degree of central planning, facilitation and incentivisation. Surely it would not be beyond the wit and competence of those with relevant responsibilities to facilitate a scheme such as this. Might not existing vendors with, say, perfect compliance records over perhaps three years and who have maintained the highest standards of food safety, be eligible to apply for business rate relief for, maybe, three years, subject to willing landlords being supportive and not greedy on rents? In addition, other, probably young potential traders may be incentivised to bring their character and talents to Whitecross Street, providing retail services in

such fields as food, arts and crafts, fashion and suchlike.

The Beech Street tunnel is a different but no less unpleasant story. The good news is that we are free from diesel and petrol pollution; the bad is that we have a deserted street, complete with dark, malodorous and ugly rubbish dumps and service yards. One might wonder if, especially at night, the Beech Street tunnel is more, or less safe for anyone walking alone through the tunnel. The traffic and therefore some watchful eyes and helpful people are no more. I have read the words “transformative plans” used in relation to the Beech Street tunnel but I would hope that transforming it to nothingness is not enough. With its shabby, dirty and often damaged and dangerous variously coloured

PLANNING AND BUILT ENVIRONMENT

panels, its wall-mounted grills and inadequate footpaths, might not the spine of Culture Mile benefit from opening up some of its covered walls to create, along with Whitecross Street and other locations within the Barbican estate and nearby, pleasant, viable and appropriate commercial premises? I am not optimistic.

Robert McKay

Another fine mess at Clarendon Court

Not only does the City Corporation waste our time and energy on abortive consultations, such as for the works which are subject to the provisions of the Highways Act, s.278 (see the May issue of the Newsletter, www.barbicanassociation.co.uk/wp-content/uploads/2020/04/BA-NEWSLETTER-MAY2020-approved.pdf), but it fails to consult local residents on matters that actually affect them.

The approved building plans show the external finish of the upper levels as being cream in colour. Bad enough, in my view, but unbeknown to those of us who have to look at it every day, the City Corporation has approved the use of almost black external finishes.

Perhaps worse, though, is the new public pocket park, the Jewin. At present, the final layout has not been approved, as, last year, the City Corporation rejected parts of the original plans and it is now considering revisions. Included is the proposed boundary fence in the form of two-metre tall railings with a matching gate. Again, no reference was made to this in the approved building plans. Despite the Jewin park being open to the public, residents only became aware of the plans in June 2020 and then as a result of a casual search on the planning portal.



A question of taste

Cripplegate CC, Sue Pearson, had asked to be kept informed of all applications relating to this area but had not been given details of the Jewin park application.

Fred Rodgers

Chair, Bernard Morgan Liaison Group

Residents' objections do succeed

Under previous City Corporation plans, the newly refurbished Golden Lane Community Centre was going to be home to the Golden Lane Estate Office. Not only would this proposal have reduced the space available for the community, but it was seen as an intrusion into community activities on the part of the City Corporation. All this is because the existing estate office and storage facilities were to be converted into three flats. In July 2020, however, the City Corporation applied for planning permission to convert the storage facilities into two flats and to refurbish the Estate Office. This is a win for those Golden Lane Estate residents who objected to the loss of part of their community centre. It is not a complete victory, though; residents have already had their spare keys returned to them, as the reduced space will no longer provide enough room for key storage in the estate office.

Fred Rodgers

Chair, Bernard Morgan Liaison Group

FAKE NEWS?!

(Not the) Barbiworld Lido (in dreams)

In recognition of the forbearance of Barbican residents during the Covid lockdown, the authorities have allocated funding from the Bank Junction and Beech Street Tunnel penalty charges fund for the transformation of the Barbican lake; it has become a residents' lido during August. Subject to social distancing, public health, all other relevant health and safety and other special requirements, residents can swim in the natural waters of the Barbican lake. In a spot to rival the natural Hampstead Ponds or Serpentine Lake in Hyde Park, replete with ducks and reeds, swimmers can enjoy the waters surrounded by the geranium-filled terraces of the surrounding architecture. A Brandon Mews diving-board alongside the waterfall is complemented by a jaunty Perspex tube water slide above the dredged deeper eastern end of the lido. By St.

Giles' Church, accessed by the stepped sun terrace alongside the closed Girls' School, the toddlers' area, with its colourful inflatables in the moat, is protected by volunteer lifeguards. Orange and palm trees in their planters, borrowed from the conservatory, provide shade for the sunbathers as they enjoy snacks on the Lakeside Terrace. A 1960s Bedford ice cream van sells 99s* and ice lollies. Fully Covid-19 compliant, the Barbican Swimming Club has dedicated lanes for more enthusiastic swimmers; Thursday afternoons and early evenings, for those who are so inclined, are naked swimming times. Upon presentation of their appropriate credentials, the Lido is for exclusive use of residents (who, after all, pay 40% of the cost of



*Free 99s for the over-99s. 99p for everyone else. No cash!

the lake anyway) and their guests. If successful, the 2020 Summer Lido might (or will not) become an annual addition to Barbican Centre amenities.

Tony Swanson

The Barbican Wildlife Garden: Then and Now

WILDLIFE AND GARDENS



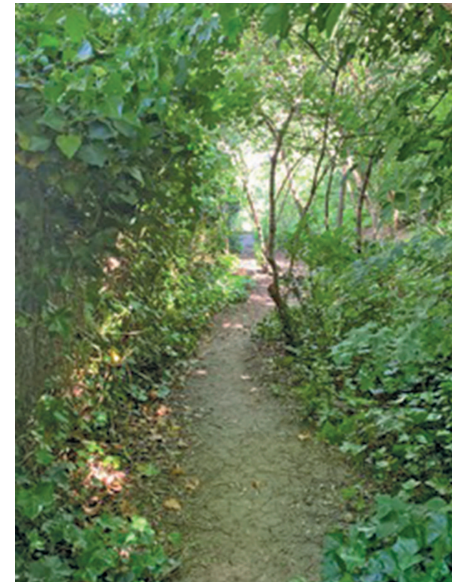
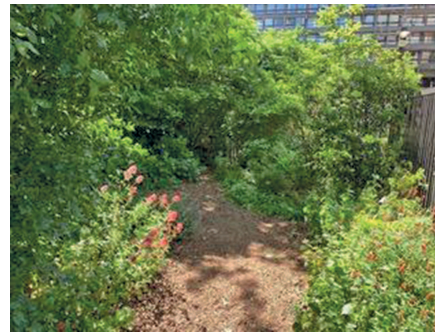
L-R: The largely impenetrable shrubbery in 2007; the beginnings of the Bunyan ramp hedge in 2006

I had the good fortune to be given some wonderful photographs of the Barbican Wildlife Garden, taken around 2006 to 2007, when the process of creating a wildlife garden was in its infancy. I was struck by how much had been achieved since then, so here is a reflective review, as a tribute to those who have worked in the Garden over the years. All images from 2006-2007 are reproduced with the kind permission of Wenda Sturrock.

“The Shrubberty” (formerly the Cottage Garden)

In 2007, the western end of the Garden was mostly impenetrable. Work had started in 2006 on creating a hedge along the Bunyan car ramp and there was a rough path which petered out halfway down, amid a jungle of ivy.

Today, a magnet for bees, there is still plenty of ivy, both on the ground and on the railings, where it flowers yearly. Work has cleared and kept open the path, which now links to the bottom gate and shrubs; hedge species run along the whole border to provide a source of food and nesting sites for the Garden’s birds.



L-R: The top of the shrubberty today; the path down to the bottom gate

The Meadow and Central Garden

In 2007, work began to create a meadow of wildflowers and mixed grasses out of the original amenity lawn of tough rye grass. Since then, extensive rotovating, digging and reseeding has been needed to create an environment wherein native wildflowers can compete with the original grass. Other additions include a path across the centre of the meadow (forged by foxes and, in 2016, formalised), the herbaceous border along the eastern fence, created from an orphan grass strip, the Meadow Pond, dug in 2017 and the Meadow Orchard, with its fruit trees and palisade.

Anne’s Pond and eastern end of the Garden

This end of the Garden has been transformed by the small pond, which was added in 2011. In 2007, the area was open, sloping ground, mostly ivy covered, running down to the old basements of Bridgewater Square. Now it is a beautiful oasis in the summer, shaded by trees, which were planted around 2012, at which time the scrub barrier was added where the land falls away sharply. Originally for safety, it has become a quiet, undisturbed area for birds to roost.

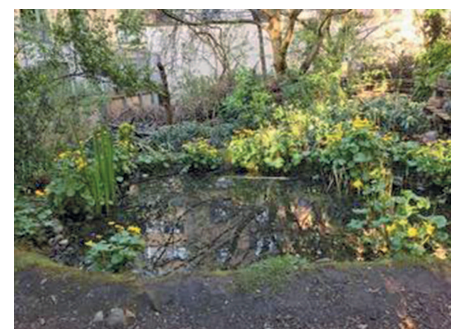
This is just a brief glimpse into the hard work, over the years, of many volunteers, for whom thanks are deserved from those who today enjoy the results of it.



L-R: The centre of the Garden in 2007; volunteers begin the process of digging and seeding the Meadow



L-R: Today’s view across the Meadow Orchard towards the pond; the meadow in flower last spring



L-R: The eastern end of the Garden in 2007; the view today across the pond towards the scrub barrier

From Scammers to Civil Injunctions and Criminal Behaviour Orders



With what is hoped to be a steady decline in the number of COVID-19 related deaths, I am sure that most, if not all of us, are pleased to see the easing of lockdown measures, provided that we are not confronted with a second wave of Coronavirus, that might be extremely harmful to health, well-being and the economy.

In addition, during the pandemic, we have witnessed a significant rise in scams and other forms of fraud. Indeed, fraud and cybercrime are currently the most prevalent crimes encountered in the U.K.

In the May issue of Barbican Association Newsletter, I presented examples of the types of scams and fraud against which to be alert. I provided information about *Action Fraud*, together with its contact number of 0300 123 2040 and encouraged residents to make reports if they believed that they had been the victim of fraud. Below is more background information about Action Fraud and how it operates.

Action Fraud was launched in 2005 and since 2008, the City of London Police has been the national lead police force for fraud. This is a broad role that incorporates many aspects, from investigating some of the country's most complex frauds to hosting the national fraud and cybercrime reporting centre.

All frauds and a majority of cybercrimes in England, Wales and Northern Ireland are

reported to *Action Fraud*. These reports are then analysed by the National Fraud Intelligence Agency (NFIB), also hosted by the City of London Police, and sent to the police force of the area in which the suspect is believed to reside, or retained within the NFIB to inform on disruption and warning activity, such as a spam threat.

Action Fraud and the NFIB do not investigate fraud. The system constructs an intelligence picture and uses state-of-the-art technology to identify patterns in fraud reports. This information is used to prevent further frauds, by requesting removal of suspected enablers, such as websites, telephone lines and bank accounts. It also provides police forces with the intelligence to investigate and take action against alleged criminals operating in their areas.

In 2018, significant investment by the Home Office and City of London Corporation in the service led to a comprehensive overhaul of the reporting facility, including the creation of a "user-friendly" reporting interface for businesses, enabling up to 1,000 alleged crimes to be reported in a bulk upload and an end-to-end "track my crime" facility.

It is with this example in mind that the Barbican Estate Security Committee is developing an easy-to-use reporting system for residents, for separate purposes, to be able to report alleged "nuisance and annoyance"

SECURITY AND SAFETY

incidents. The aim is to provide admissible evidence to be considered in relation to possible changes to the byelaws and for other relevant purposes. This might include the possibility of granting powers to contract with an accredited private security firm, using its operatives, at particular times of day, to patrol and attempt to prevent alleged nuisance and annoyance activity across the Barbican Estate.

David Bradshaw C.C.

Chairman, Barbican Estate Security Committee

Useful Police Contact Numbers

City of London Police switchboard-
Crime reporting: 020 7601 2222

Non-emergencies: 101

Emergencies (landline): 999

Emergencies (mobile): 112

Anti-Terrorist Hotline: 0800 789 321

Action Fraud Team: 0300 123 2040

Numbers to call in the event of Disturbance

City Noise Team: 020 7606 3030

for noise happening currently. (For advice, email: publicprotection@cityoflondon.gov.uk but response to emails is not immediate)

Transport for London (Underground):

0343 222 1234 (option 6) 08:00-20:00.

(Use online form at <https://tfl.gov.uk/help-and-contact/>)

Crossrail: 0345 602 3813

Art is Back!

We have been notified of the re-opening of the PEER Gallery at 97-99 Hoxton St., London N1 6QL (T: 020 7739 8080 / E: info@peeruk.org), where, until August 29, the exhibition is "Silo" by

Alex Urie. Admission is free. Wednesday to Saturday 12.00 to 18.00.

It is not necessary to book an appointment to visit the exhibition but only three people will be allowed into the gallery at any one time, so it may be necessary to wait. Hand sanitising will be

CULTURE AND ENTERTAINMENT

available; they advise that visitors wear face masks or covering while in the gallery.

Urie's large scale paintings are the result of brushing, pouring, dumping and flooding tinted household paint on to an untreated surface of canvas, linen or jute. Working on the reverse side of the artwork means that when it is flipped over, a residual, sometimes completely unforeseen image is revealed. Urie then works on both sides while the paint is still wet, building up layers of colour and texture and adding more graphic elements, to compose a complex picture plane. He uses personal photographs and random found online imagery in the production of these compositions.

Barbican Tuesday Club

The Barbican Tuesday Club has remained dormant following the onset of Coronavirus; we shall, however, resume our weekly meetings as soon as it is safe to do so. In normal circumstances, we would be coming to the end of our activities for the year and looking forward to our 'end-of-term' summer party, following which we would have a break and recommence in September.

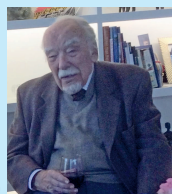
Since March, it has been disappointing not to have been able to welcome our ever-informative and entertaining invited speakers. Recently, we

should have been dipping our toes in the briny on a planned trip to Broadstairs.

However, one happy event was the recent 100th birthday of our most senior member, Leslie Breadmore, whose picture is shown.

We are looking forward to reconvening at a date yet to be agreed and to hearing members' stories of coping with the lockdown.

Anthony Croot



100 years young!
Congratulations!

BA DISCOUNT SCHEME

A list of organisations offering discounts or other incentives to Barbican Association members. If you are not already a BA member, make sure you join the Barbican Association to qualify – for most of these just one visit will more than cover your annual BA membership subscription cost. Local businesses which wish to participate and offer a discount or other incentive to BA members should contact Lawrence Williams on 020 7588 0898, or 07853 836 623 or by email to barbicanlife@gmail.com for further information.

CURRENT SCHEME MEMBERS

FOOD AND DRINK

Après Food Co - MAKE FRIENDS WITH FOOD Delicious homemade gluten free food your body loves. Comfort food without the slump. We all need great food that makes us feel alive – that's why this isn't just a restaurant: it's a movement. *Offering Barbican Association members 15% off all food on the menu (so please mention when booking and/or show membership card on arrival).* Open Mon – Fri: 8am – 4pm and 6pm – 10pm & Sat: 10am – 2pm, 72 St John Street, Clerkenwell, EC1M 4DT, Tel 0207 6868 888, Email hello@apresfood.com

Artillery Arms 15% discount on drinks on presentation of BA membership card. The Artillery Arms is at 102 Bunhill Row, EC1Y 8ND. Telephone 020 7253 4683 for table bookings. Website www.artillery-arms.co.uk

Bowling Bird Contemporary neighbourhood restaurant offering

fresh, seasonal food and a select choice of fine wines and spirits. *Offering Barbican Association members 25% off all food on the menu.* (Please mention when booking and/or show membership card on arrival). Opening Hours Tuesday through Friday 12 noon to 3:30 pm and 5:00 pm to 10:00 pm. Bowling Bird, 44 Cloth Fair, EC1A 7JQ. Tel: 020 7324 7742. www.bowlingbird.com

Chiswell Street Dining Rooms 20% off total food bill in the evenings Mondays to Fridays. To take advantage of the offer please bring proof of membership. Not applicable with any other offer. To view menu or to reserve a table visit the website www.chiswellstreetdining.com

Coq d'Argent A complimentary glass of Champagne when ordering from the a la carte menu (up to 6 Max, not to be used in conjunction with any other offers). To redeem, Barbican Life members will need to mention 'Barbican Life' when making their booking or present their membership card on arrival. Coq d'Argent, No 1 Poultry, EC2R 8EJM Tel: 020 7395 5000.

The Coriander Indian Restaurant. Family-run business, fresh Indian food. 55 Aldersgate Street, Barbican EC1A 4LA T: 0207 600

4747 or 0207 7964 499 www.thecoriander.com/barbican-coriander.html Barbican Resident Special Discount (please show BA card). Take Away Collection – 15% Take Away delivery – 10% Dine in – 10%

Crab Tavern Crab Tavern in Broadgate Circle is a seafood restaurant and bar that boasts a menu that merges New York style with classic west coast American fare. Choose from an abundance of hero crab dishes, rolls and salads, as well as more refined dishes from the classic grill and seafood selection. 15% discount on food only offered to Barbican Association members. Unit 37, Broadgate Circle, London EC2M 2QS, UK. Tel: 020 7096 2044. Website: crabtavern.co.uk

Fare New all-day-dining bar and canteen split across two floors offering a grab and-go coffee area, intimate cocktail and wine bar, and restaurant serving a selection of modern seasonal small plates with larger sharing dishes from the robata grill. 20% off food for Barbican Association members. State resident discount when booking and show membership card on arrival. Find Fare Bar + Canteen at the Morelands building on Old Street, 0203 034 0736

www.farebarandcanteen.com.

Fish Central Bustling neighbourhood seafood restaurant serving the well known as well as the more exotic varieties of the freshest fish. 10% off the total bill – restaurant only. 149-155 Central Street, King Square, London, EC1V 8AP. Tel: 0207 2534 970

Gattis City Point 10% of final bill in the evenings, Monday to Friday. To take advantage of the offer please bring proof of membership. Gattis Restaurant, City Point, 1 Popemaker Street, EC2Y 9AW. Tel: 020 7628 8375. www.gattisrestaurant.co.uk Take-away and deliveries also available.

Hammer & Tongs South African style barbecue (braai) restaurant in Farringdon, close to Exmouth Market. Meat and fish dishes cooked over an open wood fire indoors to give the authentic braai taste. 20% discount on the total bill for Barbican Association members. Please mention membership on booking or being seated in the restaurant. Open Monday-Saturday 12 noon to 12 midnight. Hammer & Tongs, 171 Farringdon Road, London EC1R 3AL. Tel: 020 3302 6645. Web: www.hammertongs.co.uk

The Jugged Hare British GastroPub with open kitchen and separate private events space on the corner of Chiswell Street and Silk Street. 20% off the total food bill Monday – Friday dinner and all day on Saturdays and Sundays. 49 Chiswell Street. London EC1Y 4SA. www.thejuggedhare.com

LINO London LINO is a new bar and restaurant taking a new approach to drinking and dining in the city. The offer they are currently running for residents is 25% off the food bill. (Not to be used in conjunction with any other offer. Subject to availability. Offer valid for bookings+ walk-ins. State resident discount when booking and show membership card on arrival). Find LINO at 90 Bartholomew Close, EC1A 7EB or call on 020 8016 5199 www.linolondon.co.uk

Moshi Moshi Sushi Moshi Moshi is a calm, discreet place serving authentic Japanese sushi and izakaya-style dishes. It offers all Barbican Association Members a 10% discount on their total bill on presentation of the BA Membership card. Liverpool Street, Unit 24, Liverpool Street Station, London EC2M 7QH (above platform 1, behind M&S). Tel / Fax: 020 7247 3227

Neo 14-17 Carthusian Street, Tel: 0207 726 8925: Special pizza and drink offer for BA members – any Pizza and a glass of house wine or soft drink for £9.95. Neo's pizza dough is made fresh every morning and only quality fresh toppings are used. Special offer applies from Saturday through to Wednesday.

Old Red Cow 71/72 Long Lane. 15% OFF food and drink Monday to Saturday. Please bring your card and quote 'BA Membership Card' if booking. Discount cannot be used in conjunction with any other offer. Walk-ins and bookings welcome. Tel: 020 7600 6240, email: oldredcow@localbeerhouse.com

Pho Vietnamese Cafe/Restaurant 10% discount at all times. 86 St John Street, EC1M 4EH. Tel: 020 7253 7624. Email: info@phocafe.co.uk. Pho is open Monday to Friday from late morning to late evening and on Saturday evenings.

St Barts Brewery Bar/restaurant on corner of Long Lane and West Smithfield. 20% weekend discount off all food and drink on production of Barbican Association membership card. Bookings not necessary but advised. 66 West Smithfield, EC1A 9DY. Tel: 020 7600 2705. To view menus see website www.stbartsbrewery.com

Stern and Glory Vegan restaurant located close to the Barbican in Bartholomew Close. First London location following huge success of initial Cambridge establishment. Restaurant offers Barbican Association members 20% off food for bookings and walk-ins. Please mention BA discount offer when booking or entering. Stern and Glory is at 60 Bartholomew Close, EC1A 7BF. Tel: 0203 969 9392. Web: sternandglory.co.uk. Open Mon-Fri 08.00–23.00, Sat 10.00–23.30, Sun 10.00–17.00.

Vecchio Parioli Friendly Italian restaurant at the corner of Aldersgate Street and Carthusian Street offers Barbican Association members a 10% discount on production of their membership card. 129 Aldersgate Street, EC1A 4JQ. Tel: 0207 253 3240.

Wood Street Bar and Restaurant Mon to Wed 10% off total bill when sitting down to dine. Maximum of 6 people in a party. The Barbican Association card discount must be mentioned either when booking or when ordering to take advantage. Barbican Association membership card should also be shown to person taking order. Wood Street Bar and Restaurant, Cnr. Wood Street and Fore Street, Barbican, London EC2Y 5EJ. Tel 020 7256 6990

HEALTH, BEAUTY AND WELLBEING

Acupuncture Access Acupuncture Access at 193 Whitecross St offers 20% off initial consultation to Barbican residents, and 10% thereafter. Beat-off burn-out with this deeply relaxing treatment. Herbs are not used, which keeps the overall cost of treatment down. www.AcupunctureAccess.co.uk 07553 636841

Barbican Dental Care 10% off normal fees; 25% off customised home whitening; 30% off combined "thermal diffusion" and customised home whitening Amanda Lenihan, Barbican Dental Care, Lower Ground Floor, 2 Cophall Avenue, London EC2R 7DA. Tel: 020 7256 2477. Website: www.barbicandentalcare.com

Barbican Dental 10% discount on examinations and hygiene treatments for Barbican Association Members. 1 Walside, Wood Street, Barbican, London EC2Y 8BL. Tel: 0207 638 8200 Website: www.barbicandental.com

Barbican Physio A team of highly qualified and experienced physiotherapists offer a broad range of physiotherapy services. 15% discount on physiotherapy fees for self-paying Barbican Residents on presentation of BA card. Entrance off Podium Level. No. 1, The Postern, Wood Street, Barbican, London EC2Y 8BJ. Tel: 020 7606 6530. Website: www.barbicanphysio.co.uk

Bodymotion Chiropractic Clinic 15% discount on presentation of Barbican Association membership card. No. 1 Walside, Barbican. Phone 020 7374 2272 for appointment. www.bodymotion.co.uk

City Psychotherapy Psychotherapy and Jungian analysis for adults by UKCP accredited psychotherapist. 10% discount on initial consultation for BA members. Consulting room 2 mins from Barbican tube station. To arrange an appointment please call Catherine Cox on 020 7796 3454 or email ccox@citypsychotherapy.org. For further information please visit www.citypsychotherapy.org

Clear Coaching and Training Moving you from where you are now to where you want to be. 1-2-1 coaching in the Barbican with accredited Coach, DISC assessor and NLP Practitioner. 10% discount on Coaching Sessions. Contact Michele 020 7628 0887 / 07939 047 094 E-mail: michele@clearcoachingandtraining.com, www.clearcoachingandtraining.com

Easton London New barber in the WeWork building on Moor Lane. Online booking only (pay after) and customers can also enjoy free café and bar. Currently, Easton London offers a 50% discount on first-time bookings for their hair and beard package. Use the code EASTON50 to redeem. However, for Barbican Association members, you can also use the code BARB10 for an ongoing 10% discount on all services. Book your appointment at https://www.eastonlondon.com/pages/locations-moorgate and just show your Barbican card at the shop to qualify.

Health in the City Formerly the Feelgood Centre and now moved to Room 57, 65 London Wall, EC2M 5TU, is offering Barbican Association members a 10% discount on a wide range of Therapies and Treatments which are available from specialist practitioners. For a full listing please check the website: www.feelgoodcentre.com. For booking or further information call 07946 084 848 or email feelgoodcentre@yahoo.com. Web: www.healthinthecity.co.uk

Insight London Counselling and Psychotherapy 20% discount on the initial consultation for BA members. Fees for ongoing sessions are negotiable according to individual circumstances. Individual, couple and family sessions with a Chartered Clinical Psychologist. Consulting rooms in Golders Green, close to the Underground, 25 minutes from Moorgate. On-street parking is available. Website: www.insightlondon.co.uk. To arrange an appointment contact Marc Hekster 07775 629 432 or email: info@insightlondon.co.uk

London Eye Optique London Eye Optique Optometrists is offering Barbican Association members 10% discount on all complete pairs of spectacles. *Terms and Conditions apply. London Eye Optique Opticians, 2a Cherry Tree Walk, Whitecross St. Barbican, London EC1Y 8NX. Tel: 0207 256 9778. To find out more about our services please email us on optician@londoneyeoptique.co.uk or alternatively visit our website www.londoneyeoptique.co.uk

No74 Hair & Beauty No 74 is delighted to give an introductory 30% discount for the first visit on a single service for all BA Members. Discount 30% off for the first visit, permanent discount 10% off on all hair and beauty services incl. YON-KA massage and facials, Sebastian, Wella & OPI treatments @ No74, 74 Compton Street, EC1V 0BN. www.no-74.co.uk, info@no-74.co.uk, Tel. 020 74 908555, BA card required

Personal Training Private personal training in a studio – up to 20% discount for BA members. Individual 1:1 sessions provided by an experienced, passionate trainer close to Old St roundabout (less than 10 minutes walk from the Barbican): phone 07729219328 email: JamesDrainEsq@gmail.com Website: BodyEngineer.co.uk

Psychotherapy City 10% discount on first four psychotherapy, counselling or coaching sessions to BA members on production of their membership card (5% to all Barbican residents). Practice at London Bridge. Contact: Amanda Falkson. Phone: 0777 557 0208. Email: amanda@psychotherapycity.co.uk Web: www.psychotherapycity.co.uk

Registered Osteopath – Lucy Bracken 25% discount on the first three appointments 10% discount thereafter to all BA members. Based five minute walk north of the Barbican. Drakes Gym, 1 Pardon Street, EC1Y. Call Lucy on 07712 647 282 or email Lucybracken@mac.com

NEW – Registered Osteopath and pain management – Christopher Blackburne – BA members and residents receive a 25% discount for Initial Osteopathic consultation and treatment and 20% discount thereafter. Hermes Health, 33-35 Chiswell Street, EC1Y 4SF. For bookings text Chris on 07966 243653 or email chris@cbosteopathy.com/Website – www.cbosteopathy.com www.hermeshealth.uk

Thao V Hair Studio Our spacious and stylish hair salon is located t the foot of Lauderdale Tower in the Barbican. We offer Barbican Association members 10% off a haircut or blow dry on your first visit, and we also have a loyalty scheme for regular customers. Please request the discount when you book. Full details, pricing and opening times are on our website www.thaov.com Bookings: 020 7628 4897, or Book Online at www.vagaro.com/thaovhairstudio

SALES AND SERVICES

Abacadabra Services 5% discount off regular weekly, fortnightly or monthly cleaning prices and a 10% discount off prices for one-off Spring and end of tenancy cleans. Contact Abacadabra Services Ltd., 10 Glasshouse Yard, Barbican, London EC1A 4JN or call Allan Lee on 020 7336 7686. Fax: 020 7336 7687. Email: info@abraserve.co.uk Website: www.abraserve.co.uk

Certax Certax Accounting (EC London) 5% off the first years Tax & Accounting services if you are looking to change accountants. Aimed at individuals, companies, contractors & landlords. Contact Marie on 07903 585959, 81 Rivington St., Shoreditch, EC2A 3AY. www.certaxaccountinglondon.co.uk

Computer Saviour Friendly visiting computer specialist undertakes maintenance, repairs, installations, networking virus removal etc. – all your computer needs. 10% discount for Barbican Association members. Call Neill Hoskins on 079 600 89528 or

email neill@computersaviour.co.uk

LSO Live LSO Live is the record label of the London Symphony Orchestra, the Barbican's resident orchestra. Barbican Association members may claim a 20% discount – using the code BARBICANLSO – on any orders of CDs or downloads made via the online shop – https://solive.lso.co.uk. LSO Live CDs are also available from the Barbican Centre shop but without a discount for now.

Mail Boxes Etc, Barbican 10% discount to BA members on any Fedex International Priority or UPS Express shipment. Members should show their BA membership cards and discount will be applied at time of purchase on the current Fedex or UPS retail price. Not valid with any other offer and only available at Mail Boxes Etc, Barbican. We are open from 8.30am to 6.00pm Monday – Friday. 128 Aldersgate Street, London, EC1A 4AE. Tel: 0203 3261116, email: info@mbobarbican.co.uk

Prince of Wales Dry Cleaners Service includes, dry cleaning, laundry service, linen service. We also clean leather and suede, and do alterations and repairs. We also provide shoe repairs. Free pick up and delivery service. Special offer laundering 5 shirts for £7.50. Offering 10% discount on first orders and any bulk orders. 17 Prince of Wales Rd, London NW5 3LH Phone: 02072 671540 and 07590 377245

Urban Locker Self Storage Your stuff, close by at Paterson Court, Peerless Street, London EC1V 9EX. Tel: 020 3637 0850. Catering for all your storage needs. Business and Domestic, Safe and Secure 10% Discount on any solution when presented with the BA membership card

CULTURE

Charterhouse 10% off the Charterhouse tour, or the Brother's Charterhouse Tour, subject to availability (normally £15 and £20 respectively). Tours daily Tuesday-Saturday. Book at Museum Reception showing your card (one tour place per card). You can book up to one week in advance. A great opportunity to discover one of London's most important historic sites, embracing seven centuries of history, right on the Barbican's doorstep. The Charterhouse has been a burial ground, a monastery, a Tudor mansion, school, and almshouse, which it remains to this day. www.thecharterhouse.org Charterhouse Square, London EC1

Velorose Gallery Cultural Hub Gallery in beautifully refurbished landmark building offers Barbican Association members 5% – 10% discount on works from current and previous exhibitions. 1B Charterhouse Square EC1M 6EE | www.velorose.com | 020-7253 1090 | gallery@velorose.com

FURNISHING

Adams' Blinds Measure, supply and fit premium made-to-measure window blinds and shutters. Use promo code BARB01 for 15% discount. www.adamsblinds.co.uk or email John at info@adamsblinds.co.uk for further details.

Alma Home 10% discount on furnishings. View at showroom at 8 Vigo Street, London W1S 3HN, or in Selfridges. See also website www.almahome.co.uk. Contact Tisha Richbell on 020 7377 0762 or by email: tisha.richbell@almahome.co.uk for further details.

Hand Drawn Walls Bespoke murals from Hand Drawn Walls: Make your space your own with an interior mural. See a wide range of examples from small details to full walls at www.handdrawnwalls.co.uk. We'd love to offer all Barbican Association members a free initial visit and a 15% discount. Drop us a line at tom@handdrawnwalls.co.uk, or call Tom on 07906 382 639.

MAR-DEN We source and sell a range of art deco, midcentury and modernist furniture. We already have fantastic clients in the Barbican and would now like to offer all residents a 10% discount. Please contact Frances on 07940 762885, or email info@mar-den.co.uk. Alternatively you can enter 'barbican' in the discount box and purchase items online. Please visit www.mar-den.co.uk

MILK Concept Boutique Small furnishings, contemporary hand-crafted lighting, collectable porcelain, fragrances, travel accessories and exclusive fashion labels can all be found relaxing in comfort amid the whitewash Victoriana and petite elegance of The Clerk's House, beside Shoreditch church. BA Members offered discounts of 5% to 10% on all goods except Fornasetti. 118 1/2 Shoreditch High Street, London E1 6JN. Tel/Fax 0207 7299880

MyDreamKitchen 5% discount on fitted kitchens. Contact Spiro Nicholas, MyDreamKitchen, 708 Lea Bridge Road, London E10 6AW. Freephone 0800 018 5654. Email: spiro@mydreamkitchen.co.uk Web: www.mydreamkitchen.co.uk

Articles published in the Barbican Association Newsletter do not necessarily represent the views of the Barbican Association or the Newsletter's editor. While submitted material is encouraged, publication thereof is not guaranteed and any content for publication may be subject to editorial scrutiny and alteration, based on the editor's judgment. Proposed material is submitted and accepted subject to that understanding. Whereas all intellectual property rights of originators are respected and protected in compliance with UK intellectual property law, the editorial content, structure and format of the Barbican Association Newsletter is the intellectual property of the Barbican Association and may not be reproduced without written permission. If you wish to comment on any of the articles in the newsletter, make any suggestions about items which you would like to see covered or offer to write an article, please contact us. The Barbican Association Newsletter Editor is Robert McKay, email: robert.mckay123@btinternet.com. ©2020 The Barbican Association